






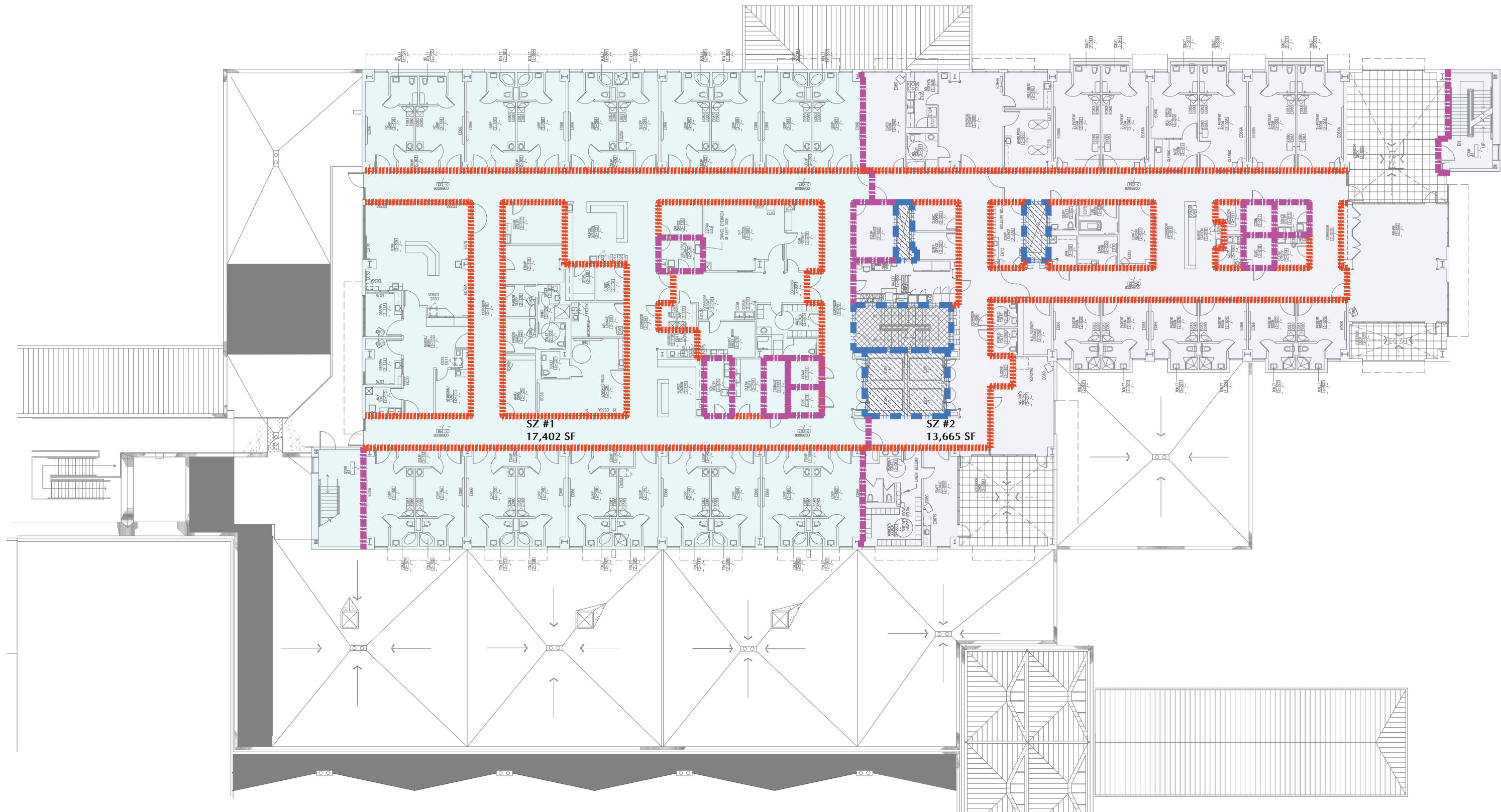


**LEGEND**

|   |   |
|---|---|
|  4 HR FIRE BARRIER |  2 HR FIRE BARRIER         |
|  CORRIDOR WALL     |  CURTAIN DOOR              |
|  SMOKE PARTITION   |  SMOKE COMPARTMENT BARRIER |
|   |  2 HR EXIT PASSAGEWAY      |





SZ #1  
17,402 SF

SZ #2  
13,665 SF

**SMOKE ZONES**

- SZ #1
- SZ #2

**LEGEND**

- SMOKE BARRIER (4 HR RATED WALL)
- 1 HR FIRE RATED WALL (INT. 20 MIN. RATED DOORS)
- 1 HR FIRE/SMOKE RATED WALL OCCUPANCY SEPARATION (INT. 60 MIN. RATED DOORS)
- 2 HR FIRE/SMOKE RATED WALL (INT. 90 MIN. RATED DOORS) (EXT. 3/4 HR OPENINGS)
- 2 HR EXIT PASSAGEWAY
- 2 HR SHAFT ENCLOSURE